

Seriously

Awesome

Student

H A N D B O O K



Weaver Elementary

2022-23

Table of Contents

General Information

- Weaver Elementary Contact Information..... Page 1
- Important Dates to Remember.....Page 1
- Weaver Expectations..... Page 2
- Weaver Overview.....Page 2
- Principal's Message..... Page 3
- Parent Organizations and Involvement..... Page 3

Student Services/School Policies/Procedures

- Response to Instruction Page 4
- Cafeteria Page 4
- Health Office..... Page 4
- Library..... Page 4
- Special Education..... Page 4
- Attendance Policy..... Page 5
- School Security..... Page 5
- Arrival and Dismissal of Students..... Page 5
- Procedures for the Office Page 6
- Behavior Policy Page 6
- Weaver Student Expectations Matrix..... Pages 7-8

Other policies

- Bicycle, Scooter, & Skateboard Policy..... Page 9
- Civility Policy..... Page 9
- Dress Code Page 9
- Electronic Device Policy..... Page 10
- BYOD Devices..... Page 10
- Visitation/Volunteer Policy Page 10
- Homework Policy..... Page 11

Bell Schedules

- TK/K, Grades 1-5, Early Dismissal, Early Out.....Page 12

Parking Lot/Drop-Off/Pick-Up Procedures

- Arrival/DismissalPage 13
- Safety RemindersPage 14
- Start-of-Day/End-of-Day Reminders Page 14
- Drop-Off/Pick-Up Maps & InstructionsPage 15

Student Recognition..... Page 16

Special Programs..... Page 16

Academic Enrichment.....Page 17

- Art Masters
- Music
- STEAM
- Physical Education
- Ambassadors
- LAEF

Campus Map Page 18

School Information

Address/Main Phone

11872 Wembley Rd
Los Alamitos, CA. 90720

(562) 799-4580

Administration

Dr. Todd Schmidt, Principal.....x72203

Administration Office

Wendy Hernandez, School Office Coord.....x72200

Kathy Barringer, Attendance Clerk.....x72000

Zayd Gallegos, Health Office.....x72204

Tiffany Penick, Kids Korner..... (562) 799-4588

Rachel Marchese, Cafeteria Supervisor.....x72211

Claudia Cordova, Library Media Clerk.....x72206

Student Support

Valerie McCorkle, Psychologist.....x72205

Stacy Eatmon, Wellness Counselor.....x72555

Keri-Beth Dethlefsen, Special Education.....x72290

Karrie Cook, Speech.....x72208

Katie Kolstad, Speech.....x72208

Maredi Ly, Speech.....x72209

School Website

Please visit our school website:

<http://weaver.losal.org>

for the most up-to-date information regarding our bell
schedules, school calendar, and contact information to
faculty members

Dates to Remember

First Day of School.....August 3, 2022

Back to School Night (TK/K only).....August 4, 2022

Back to School Night (1st-5th only).....August 18, 2022

Labor Day Holiday.....September 5, 2022

Fall Break.....Sept. 26-30, 2022

Fall P/T Conferences.....October 17-21, 2022

PD Day, Non-Student Day.....November 1, 2022

Veterans' Day.....November 11, 2022

Thanksgiving Recess.....November 21-25, 2022

Winter Break.....Dec. 19, 2022–Jan. 6, 2023

Martin Luther Jr. King Day.....January 16, 2023

Presidents' Break.....February 20-24, 2023

PD Day, Non-Student Day.....March 6 2023

Spring P/T Conferences.....March 20-24, 27, 2023

Spring Break.....April 10-14, 2023

Open House.....April 20, 2023

CAASPP Testing.....May 8-25, 2023

Staff Prep Day, Non-Student Day.....May 26, 2023

Memorial Day.....May 29, 2023

Last Day of School.....June 8, 2023

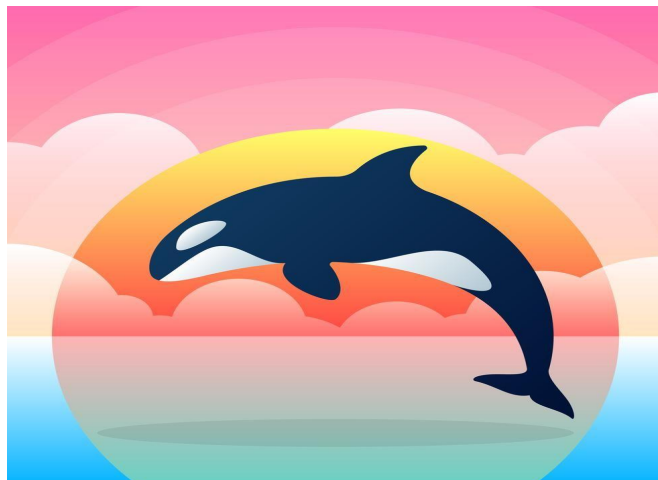
Calendar of Events

To see all of the school events this year, visit

<https://tinyurl.com/Weaver2022-23>

This is a live document so visit periodically for updates!

You can also see all school events on our school website as
well!



Weaver Expectations

ALL STUDENTS WILL

1. Be respectful and considerate of people and their ideas.
2. Understand and follow the school rules.
3. Be responsible for their school work and homework.
4. Learn from their mistakes.
5. Be a positive contributor to the school community.

ALL TEACHERS WILL

1. Provide students with a safe and challenging classroom.
2. Communicate with parents and students about academic and social progress.
3. Communicate homework policies to parents and students.
4. Enforce school rules.
5. Communicate individual expectations clearly.
6. Celebrate student successes.

ALL PARENTS WILL

1. Treat teachers and all staff members with respect.
2. Read communications from the school.
3. Support children on completing out-of-school assignments.
4. Set an example by following school safety rules.
5. Speak first with the person with whom there is a concern before talking with others.
6. Make school the student's top priority.



Weaver Overview



PURPOSE STATEMENT

At Weaver Elementary, we will ensure that all students are better scholars, better citizens, and better human beings by making this A GREAT PLACE TO LEARN!

EXPECTED SCHOOLWIDE LEARNING

RESULTS

The Weaver Elementary community will be:

Emphasizing Academic Skills:

1. Critical thinking, Creativity, and Collaboration
2. Study skills/organization
3. Solid academic foundation
(reading, writing, math, science, social studies, arts, communication)

Developing Character Attributes:

1. Respect
2. Responsibility
3. Empathy

VISION

Weaver Elementary is a school of excellence that focuses on developing 21st century skills through the usage and application of signature practices and technology, while concentrating on the development of higher order thinking skills through both written and oral expression, mathematical reasoning, STEAM, collaboration, and high-interest fiction and nonfiction comprehension.

Principal's Message

Dr. Todd Schmidt—Principal

August 3, 2022



Dear #WeAreWeaver Community!

Welcome to the start of a new adventure for the 2022-23 school year!

The staff at Weaver believes that ALL children can learn and succeed. Our instructional philosophy is built on the growth mindset which is a research-based philosophy that presumes that all students bring with them capabilities that can fostered and developed by integrating their prior knowledge with proven signature instructional practices. These include balanced literacy, Cognitively Guided Instruction (CGI) in Math, depth and complexity prompts integrated across all disciplines, thinking maps, and a strong STEAM program which incorporates design thinking and instructional technology.

The elementary years are a time for growth, challenge, and discovery. Our signature instructional practices provide students with a rigorous academic experience. That, along with the infusion of collaboration, communication, creativity and innovation, and critical thinking and problem solving skills, arm our students for success in a rapidly changing global society we can't yet imagine. At Weaver we also foster risk-taking and self-advocacy skills for all students.

Weaver School believes in and focuses on a collaborative team effort with our staff, students, parents, and community members. We do not take lightly the trust you have placed in us with the education and well-being of your child. The school's culture reflects the highest standard of professional dedication and performance.

I am looking forward to an amazing school year...LET'S CONTINUE TO MAKE WEAVER "A GREAT PLACE TO LEARN!"

Parent Organizations & Involvement

How can parents get involved?

- Communicate regularly with your student's teachers.
- Register for Parent Square and be sure to add Parent Square emails to your safe inbox list.
- Periodically check your child's backpack, folder, Google Classroom, and/or Minder Binder.
- Join a parent organization such as PTA, Friends of Weaver, or School Site Council.
- Attend school events and parent meetings.
- Volunteer on campus.

PTA

Weaver's Parent-Teacher Association (PTA) is a non-profit organization dedicated to promoting children's health, well-being, and educational success through strong parent, family, and community involvement. The overall purpose of PTA is to help all Weaver children reach their potential. Go to weaverpta.org for more information about how the PTA supports Weaver!

FOW

Our Friends of Weaver (FOW) was founded in 1999 as a non-profit organization dedicated to acquiring, maintaining, improving, and updating STEAM (Science, Technology, Engineering, Arts and Mathematics) resources at Weaver Elementary. FOW's mission statement was recently updated to reflect the Board's updated goals: "Inspiring a life-long passion for learning by tapping into children's curiosity and drive to explore." For more info, go to friendsofweaver.com.

SSC

The School Site Council (SSC) is intended to be a decision-making body that represents all stakeholders of the school community. The school principal, teachers, other school personnel, and parents make up this group. Their primary responsibility is to identify common goals and assist the leadership team in establishing a plan to achieve the goals.

Response to Instruction

Response to Instruction (RtI) refers to an instructional framework that promotes a well-integrated system connecting general, gifted, supplemental, and special education services in providing high quality, standards-based instruction, enrichment, and intervention that is matched to students' academic, social-emotional, and behavioral needs. RtI combines core instruction, formative assessment, and intervention within a multi-tiered system to increase student achievement and reduce behavior problems.

Weaver implements a response to instruction plan that focuses on enrichment opportunities for students who have mastered a skill while providing additional time and support for students who are struggling with a specific concept.

Cafeteria

Each day, a well-balanced lunch is available for free in the cafeteria. In addition, state-funding has also allowed for us to provide breakfast before school, starting at 7:45 am each morning, free-of-charge. Families may also add money to a prepaid account for students to purchase snacks during recess times. Students are expected to sit at appropriate tables. We also expect them to use proper table manners, clean up after themselves, and talk in soft voices.



Health Office

Our Health Clerk is available on a daily basis from 9:30 am – 1:00 pm for minor first aid and to assist ill students. District school nurses are on call for major medical problems and mandated vision, hearing, and scoliosis screening. The Health Office maintains and updates health records for all of our students. Any medical information, including immunizations as well as any conditions, confidential or otherwise, should be turned into the Health Office personnel. Students requiring medication (prescription or over-the-counter) during the school day should turn the medicine, along with the Medication Authorization forms, into the Health Office for dispensing by a Health Clerk.

Library

Weaver is fortunate to have an excellent library right on campus. We have an extensive collection and variety of books in both fiction and nonfiction. Students are allowed to check out two books at a time, and can read up to ten books a week! Each day, students can visit the library and check out books. our library technician can assist students in finding books in their appropriate reading level. For more information, please contact our Library Technician, Ms. Claudia Cordova at x72206.

Special Education

For students who qualify, Weaver provides additional support through our special education department. Ms. Keri-Beth Dethlefsen is our special education teacher, and she and her team provide unique support for each student based on their Individual Education Plan (IEP).

In addition, Mrs. Karrie Cook, Mrs. Maredi Ly, and Mrs. Katie Kolstad provide support in both speech pathology as well as social skills. Mrs. Valerie McCorkle is our school psychologist whose primary responsibility deals with special education testing. For more information about testing for special education, please contact Mrs. McCorkle at x72205.

Attendance Policy

California State law requires that students attend school regularly and punctually.

- If circumstances prevent a child from attending school, their parent/guardian must notify their student's school office by phone as soon as possible.

Our attendance line is (562) 799-4740 x72000.

- Students with more than 15 absences for the school year, excused or unexcused, may result in referral to the School Attendance Review Board (SARB), and/or possible retention.
- Tardiness is prohibited by law in California. Education Code Section 48260 states that any student who is tardy to school in excess of 30 minutes on each of more than three days is considered a truancy. As with absences, excessive tardies may result in a referral to SARB.

Excused tardies/absences include only the following (in accordance with the California State Education Code):

1. Illness
2. Medical Appointment (If possible, please make these outside of school hours)
3. Death in immediate family
4. Active military exemptions

****PLEASE NOTE** All other reasons for absences are considered UNEXCUSED. If a student is absent from school, the parent is required to call the school the same day to explain the reason for the absence.**

Arrival on Campus

1. Students may arrive to school beginning at 8:00 am. School grounds will not be supervised before this time.
2. Classes begin promptly at 8:15 am. Students who arrive late are required to report to the office before going to class.



School Security

Visitors must stop in the school office prior to proceeding to any area on the school campus to sign in and wear a "Visitor" or "Volunteer" badge.

Weaver is a closed campus. As such, all gates and classroom doors will be locked at 8:15. In order to protect instructional time, all parents will need to be off-campus by 8:15 on non-flag ceremony days. On Flag Ceremony days, parents will need to be off-campus five minutes after the dismissal of students.

Release of Students During School Hours

- Early dismissal is discouraged. Every effort should be made to make appointments after school in order for students to complete their day. Instructional minutes should NEVER be disrupted.
- All students shall be released from school grounds under the supervision of school personnel through the school office.
- Students will only be released to the parent(s) or emergency contacts indicated on the student's emergency card.
- The person checking the student out must sign an office log and be prepared to show proper ID.
- In emergency situations when a parent needs a child to be released to someone other than the persons listed on the emergency card, the parent must do the following:
 - Phone the school office and identify themselves by repeating to the office personnel the information on the emergency card.
 - Give the name and description of the person to pick up the child. (This person will be required to show proper identification.)
- Non-custodial parents may NOT pick-up students at school unless the emergency card so stipulates or the custodial parent gives permission per the guidelines. Parents are asked to make every effort not to involve school sites in custody matters.

Procedures for the Office

1. **Forgot your lunch?**

Your child's class will not be disrupted for forgotten items! **Please make sure that your child is also clear about these rules.** Instruct your child that if he/she has forgotten their lunch, they should check the table located outside of the school office at recess or lunchtime only. (NOTE: No child will miss eating lunch. If they do not have a lunch, the cafeteria will always provide lunch for them.)

2. **Forgot your homework?**

Your child's class will not be disrupted for forgotten items! **Please make sure that your child is also clear about these rules.** Accordingly, if you choose to bring these items to school, they will be placed in a box labeled "Oops, I forgot..." located outside of the school office. The office will not call the classroom to say that either of these items has been delivered until recess and lunchtime. As a result, it is important that you instruct them where they should go should these situations occur.

3. **Have an appointment?**

Please try to schedule all appointments after school hours. If you are unable to do so, you will be required to come into the school office to sign your child out. At this time, the office staff will locate your child and instruct them to meet you in the office.

4. **Going to be absent?**

Call the 24 hour attendance line (562-799-4740 x72000). A message will prompt you to leave information so that your child is accounted for. If possible, call before 9:00 a.m. of the day your child is absent. Although you may notify your child's teacher of an impending absence of your child from school (e.g., vacation, medical leave, etc.), you still need to call the attendance line.

5. **Having a problem at school?**

Talk to your child's teacher first by either emailing him/her, leaving a voicemail message or preferably, set up an appointment to meet with your child's teacher in-person to resolve the problem.

If the problem is not resolved in a satisfactory manner, contact the school office to set up an appointment for you to meet with the site administrator.

Behavior Policy

These prohibitions include but are not limited to California Education Code provisions that are applicable to all students at school, on their way to and from school, or at any school related activities. Violations of any of the following in the California Education Code 48900 may result in suspension, transfer to another school, or expulsion from the district:

1. Caused, attempted to cause or threatened to cause serious physical injury to another person. (Mutual combat). Willfully used force or violence upon the person of another, except in self-defense. (Assault/Battery)
2. Possessed, sold or furnished any firearm. Possessed, sold or furnished any knife, explosive or other dangerous object.
3. Unlawfully used, possessed, or otherwise furnished, or been under the influence of, any controlled substance. Unlawfully sold any controlled substance.
4. Committed or attempted to commit robbery or extortion.
5. Caused or attempted to cause damage to school property or private property.
6. Stolen or attempted to steal school property or private property.
7. Possessed or used tobacco, or any products containing tobacco or nicotine products.
8. Committed an obscene act or engaged in habitual profanity
9. Disrupted school activities or otherwise willfully defied the valid authority of supervisors, teachers, administrators, other school officials, or other school personnel.
10. Knowingly received stolen school property or private property. Possessed an imitation firearm.
11. Committed or engaged in sexual harassment. "Sexual harassment" mean unwelcome sexual advances, requests for sexual favors, and other verbal, visual, or physical conduct of a sexual nature.
12. Intentionally engaged in harassment, threats, or intimidation directed against a pupil or group of pupils, that is sufficiently severe or pervasive. Harassed, threatened, or intimidated a student who is a complaining witness or witness in a school disciplinary proceeding.

WEAVER ELEMENTARY SCHOOLWIDE EXPECTATIONS

	Classroom	Hallways	Restrooms	Cafeteria
Be Respectful	<ul style="list-style-type: none"> <input type="checkbox"/> Pay attention to your teacher. <input type="checkbox"/> Follow instructions. <input type="checkbox"/> Raise your hand to speak. <input type="checkbox"/> Participate. 	<ul style="list-style-type: none"> <input type="checkbox"/> Keep hands and feet to yourself. <input type="checkbox"/> Follow directions of your teachers and other adult staff members. <input type="checkbox"/> Remember that other classes are in session and keep voices at level 0. 	<ul style="list-style-type: none"> <input type="checkbox"/> Use the restroom quickly and quietly. Voices should be kept at level 0. <input type="checkbox"/> Use equipment and supplies properly. 	<ul style="list-style-type: none"> <input type="checkbox"/> Keep voice level no louder than level 1. <input type="checkbox"/> Listen and follow instructions of all adults.
Be Responsible	<ul style="list-style-type: none"> <input type="checkbox"/> Complete your work. <input type="checkbox"/> Organize your supplies and resources. <input type="checkbox"/> Be ready to learn and try your best. <input type="checkbox"/> Stay on task. 	<ul style="list-style-type: none"> <input type="checkbox"/> Go directly to your destination. <input type="checkbox"/> Make sure you have your hall pass. <input type="checkbox"/> Set a good example. 	<ul style="list-style-type: none"> <input type="checkbox"/> Go, Flush, Wash! <input type="checkbox"/> Throw trash away in the garbage can. <input type="checkbox"/> Use time wisely. <input type="checkbox"/> Report problems to an adult. 	<ul style="list-style-type: none"> <input type="checkbox"/> Wait your turn in line to get your food. <input type="checkbox"/> Get everything you need before you get seated.
Be Safe	<ul style="list-style-type: none"> <input type="checkbox"/> Use classroom materials appropriately. <input type="checkbox"/> Walk at all times. <input type="checkbox"/> Keep hands, feet, and objects to yourself. 	<ul style="list-style-type: none"> <input type="checkbox"/> Walk face forward and stay in line. <input type="checkbox"/> Keep to the right of the walkways. <input type="checkbox"/> Keep hallways clean and clear. 	<ul style="list-style-type: none"> <input type="checkbox"/> Keep water in the sink. <input type="checkbox"/> Wash your hands using soap and water. 	<ul style="list-style-type: none"> <input type="checkbox"/> Stay in a single file line. <input type="checkbox"/> You take what you touch.
Be Kind	<ul style="list-style-type: none"> <input type="checkbox"/> Use kind words and actions with classmates and all adults in the classroom. 	<ul style="list-style-type: none"> <input type="checkbox"/> Wait for others to pass. 	<ul style="list-style-type: none"> <input type="checkbox"/> Give people privacy. <input type="checkbox"/> Always wait your turn. 	<ul style="list-style-type: none"> <input type="checkbox"/> Say please and thank you!

WEAVER ELEMENTARY SCHOOLWIDE EXPECTATIONS

Lunch Area	Playgrounds	Assemblies	Library	Office
<ul style="list-style-type: none"> ❑ Keep hands and feet to yourself. ❑ Respect other people's space. ❑ Listen and follow instructions of all adults. 	<ul style="list-style-type: none"> ❑ Take turns. ❑ Play fair & by the rules. ❑ Listen and follow instructions of all adults. 	<ul style="list-style-type: none"> ❑ Eyes and ears on the speaker. ❑ Stay focused and participate. ❑ Use appropriate voice volume level. If not sure, ask an adult. 	<ul style="list-style-type: none"> ❑ Take care of books and equipment. ❑ Keep voice level no louder than level 1. 	<ul style="list-style-type: none"> ❑ Follow directions of the front office staff. ❑ Use appropriate voice volume level.
<ul style="list-style-type: none"> ❑ Leave a clean table, bench, and floor. Pick up trash around you...even if it's not yours! ❑ Sit with feet under the table. ❑ All food and drinks stay in the eating area. 	<ul style="list-style-type: none"> ❑ Freeze and drop down when the bell rings. Walk quietly to your line after two whistle blows. ❑ Put all equipment away neatly and appropriately. ❑ Tell an adult if someone gets hurt. 	<ul style="list-style-type: none"> ❑ Keep hands, feet, and objects to yourself. ❑ Follow all directions. 	<ul style="list-style-type: none"> ❑ Put things away in their proper place. ❑ Return books and materials on time. ❑ Push in chairs. 	<ul style="list-style-type: none"> ❑ Wait patiently for your turn. ❑ State your purpose positively.
<ul style="list-style-type: none"> ❑ Eat only your own food. ❑ Raise your hand for help. ❑ Stay seated unless you have been given permission to get up. 	<ul style="list-style-type: none"> ❑ Use playground equipment appropriately and safely. ❑ Always walk while on the blacktop. ❑ Remain in designated areas. 	<ul style="list-style-type: none"> ❑ Stay in the designated area. ❑ Use walking feet. ❑ Remain seated unless asked to stand. 	<ul style="list-style-type: none"> ❑ Walk at all times. ❑ Follow directions of all adults. ❑ Keep hands, feet, and objects to yourself. 	<ul style="list-style-type: none"> ❑ Keep hands and feet to yourself. ❑ Sit appropriately.
<ul style="list-style-type: none"> ❑ Keep voice level no louder than level 1. 	<ul style="list-style-type: none"> ❑ Invite others to play. ❑ Use kind words and actions with classmates. 	<ul style="list-style-type: none"> ❑ Use appropriate applause. ❑ Use kind words and actions. 	<ul style="list-style-type: none"> ❑ Allow others the opportunity to sit quietly and read. 	<ul style="list-style-type: none"> ❑ Use polite language. Say please and thank you!

Skateboard, Scooter, & Bicycle Policies

Bicycles, scooters, and skateboards may NOT be ridden on any part of campus at any time of day or night. Students riding bicycles, scooters, and skateboards to school must store their property during the school day. A bicycle rack is available near the cafeteria for lock-up during the school day. Students will need to provide their own locks. Skateboards and scooters are not allowed to be carried around campus during the school day.

Civility Policy

(Board Policy 1313)

It is the intent of the Board of Education to provide an orderly and safe learning environment in which students and adults feel comfortable, share the responsibility for maintaining a positive school climate, and take pride in their school, its achievements, and its environment.

The policy promotes :

- * Mutual Respect
- * Civility
- * Orderly Conduct



What is uncivil conduct? Vulgar, obscene, threatening verbal/ written communication; profane gestures; taunting, jeering, inciting others; yelling at another person; interrupting; demanding; using epithets (racial, ethnic, religious, gender, color, sexuality); invading one's personal space; blocking someone's movement; refusing to leave a school area or facility.

All discussions/meetings will be civil or they will be terminated. Uncivil conduct will be reported to the principal or designee and at a minimum, a warning will be given. Continued uncivil conduct will result in removal from school/facility for minimum of seven (7) days. The policy applies to Employees, Parents, Students, and the Public and is in effect at Schools, District Facilities and Athletic/Extracurricular Events.

Dress Code

Dress is a form of expression that may affect a student's behavior and self-image. A dress code policy is necessary in order to protect the health and safety of the school environment and to foster students' success in a positive manner. Weaver reserves the right to amend the dress code during the school year to protect the school environment.

The following items may not be worn on campus:

- Hoods must be off the head at all times.
- Shirts that contain crude or vulgar language, inappropriate drawings or references to alcohol, drugs, tobacco, violence, sex, slogans or words that degrade any gender, cultural, ethnic or religious group, reference gangs, contain tagging-style writing or pictures.
- Muscle shirts, tube tops, spaghetti straps (straps must be at least two fingers in width and appropriate cover undergarments), shirts that reveal bare midriffs or having plunging necklines, or baggy or long shirts that extend past the palm of the hand when held at one's side.
- Pants that are excessively long, large, or baggy, expose undergarments or skin.
- Shorts that are excessively short or large, expose undergarments or skin.
- Skirts that are excessively short.
- Gang-related writing, reference to alcohol, drugs, tobacco, or obscene slogans or symbols on backpacks, notebooks, shoes, or clothing.
- Athletic shoes with spikes or cleats, extremely high heels or platform shoes that may cause injury (note that shoes must be worn at all times).

Consequences:

- Students may be asked to modify clothing or a change of clothes will be issued to student
- Parent contacted to bring a change of clothing
- Student may be sent home from school
- Detention

Electronic Devices

We are fortunate at our site that our students have access to telephones in every classroom and through the office for emergency use. Students are to ask their teacher or the office staff if they need to use the telephone.

Students are not permitted to use cell phones during the school day (including recess, lunch, arrival & dismissal) unless approved by the classroom teacher or site administrator. In addition, smart watches are to be on "Do Not Disturb" mode during the school day.

"Use" is defined as having the device on, out in class, having the device go off in class including vibrating, use of text messaging, retrieval of a message, checking or entering phone numbers, and retrieving a device in a backpack or purse. All devices must be turned off and out of sight during class time. "If we see it or hear it, we take it." Loss of the privilege of possession of these devices may occur should staff determine that the device has been used for an illegal purpose or it caused a disruption.

BYOD Policies

One of our primary District technology goals is to ensure that each user's interactions with technology contribute positively to the learning environment. With this goal in mind, we are implementing Bring Your Own Device (BYOD) within our District. In this initiative, students in grades 3-5 are encouraged to bring their own technology devices to school to assist their learning experience.

BYOD allows students and staff to bring and use their own technology during the day to enhance the learning experience. We expect all students and staff to be good digital citizens and support the District's Acceptable Use of Technology Policy. For more information on minimum requirements and recommendations, visit

losal.org/byod.

Students may not access personal apps on their devices during school hours. In addition, students may not use their devices in the lunch area or out on the playgrounds.

Volunteer & Visitor Policies

To maximize instructional time, **we request that all classroom visits and parent conferences be arranged ahead of time.** This can be arranged by note, email, or telephone call to your child's teacher. This procedure will protect classroom instruction from unnecessary interruptions as well as provide you a focused visit with your child's teacher.

During school hours, all visitors to the school are required to first sign in at the office and obtain an identification badge from the office. **NO EXCEPTIONS!**

Volunteer procedures:

Weaver is blessed to have so many wonderful parent volunteers. We ask that all volunteers, especially those who arrive before the start of the school day, remember to check in at the main office prior to volunteering in a classroom.

ALL classroom and non-classroom volunteers who have contact with students are required to complete the Weaver Volunteer Expectations Training. We will be hosting an in-person training on Friday, August 19 at 8:45am in the Media Center. An online version will be made available starting on Monday, August 22.

You will also need a TB test and Megan's Law clearance prior to being allowed to work with students. *For the safety of your child(ren) NO parent will be allowed to volunteer in the classroom, attend class activities/events, or have any interaction with students, anywhere on campus without this Volunteer Clearance.*

Field Trip Volunteers:

We recognize that field trips are important components in the instructional program of the schools. All school-sponsored trips involving students shall have proper supervision by school employees. Parents are encouraged to participate in such supervision. All parents now need to complete the Volunteer Procedures as well.

Homework

(Board Policy and Administrative Regulation 6154)

The Governing Board believes that homework should be meaningful, developmentally appropriate, engaging, and relevant to classroom learning. Homework should have a positive impact on student learning and is defined as the assigned learning activities that students work on outside of the classroom. Students should be able to complete homework independently and, as a result, further develop essential skills and gain deeper understanding of course content.

Make-Up Work & Homework-Free Times

Students who are absent from school, including students who are suspended, shall be given the opportunity to complete all assignments and tests that can be reasonably provided. The assignments and tests shall be equivalent to, but not necessarily identical to, the assignments and tests missed during the absence, as determined by the teacher. Students shall receive full credit for work satisfactorily completed within a reasonable period. Generally, for every day of absence, the student is given a day to make up the missed work. If a homework assignment is requested and is turned in to the teacher by the student either upon the student's return from any absence within the timeframe originally prescribed by the teacher, whichever is later, and is not graded before the end of the academic term, the homework assignment shall not be included in the calculation of the student's overall grade in the class unless it has a positive effect on the student's overall grade. (Education Code 48913.5)

School breaks and holidays are intended to be a time that is free from schoolwork for students and staff. There should be no expectations on the part of students or staff that schoolwork is done over a break period. No assignments should be given during a school break, and any long-term assignments should not be due during the first week back from a school break.

Homework shall not be assigned during standardized testing for grades 3-5.

Homework in Elementary Grades

In the primary grades (K-3), homework should consist primarily of reading and a limited number of independent exercises to reinforce previously taught skills and concepts in English Language Arts and Mathematics.

At the upper grades (4-5), homework should primarily consist of reading, practice and application of key skills and concepts in English Language Arts and Mathematics, and application of writing skills, and beginning research across subject areas. At this level, homework should be designed to build independent study habits.

Long-term assignments should be limited in number and duration. These assignments should include clear checkpoints to monitor progress towards completion.

Homework at the elementary grades should not be assigned over the weekends. (Weekly homework packets can be assigned over a week and include a weekend but should be able to be completed without using nightly time on Friday, Saturday, or Sunday.)

As a guideline, when teachers choose to assign homework, students might reasonably be expected to devote the following amounts of undistracted, focused time to nightly homework, including time devoted to long-term projects and reading:

- Grade K = Occasional short homework and/or reading for pleasure
- Grade 1 = 0-10* minutes average M-Th
- Grade 2 = 0-20* minutes average M-Th
- Grade 3 = 0-30* minutes average M-Th
- Grade 4 = 0-40* minutes average M-Th
- Grade 5 = 0-50* minutes average M-Th

*Nightly minutes are inclusive of all assigned work.



BELL SCHEDULES



#WeAreWeaver

Jack L Weaver Elementary School

Traditional Bell Schedules

2022-23

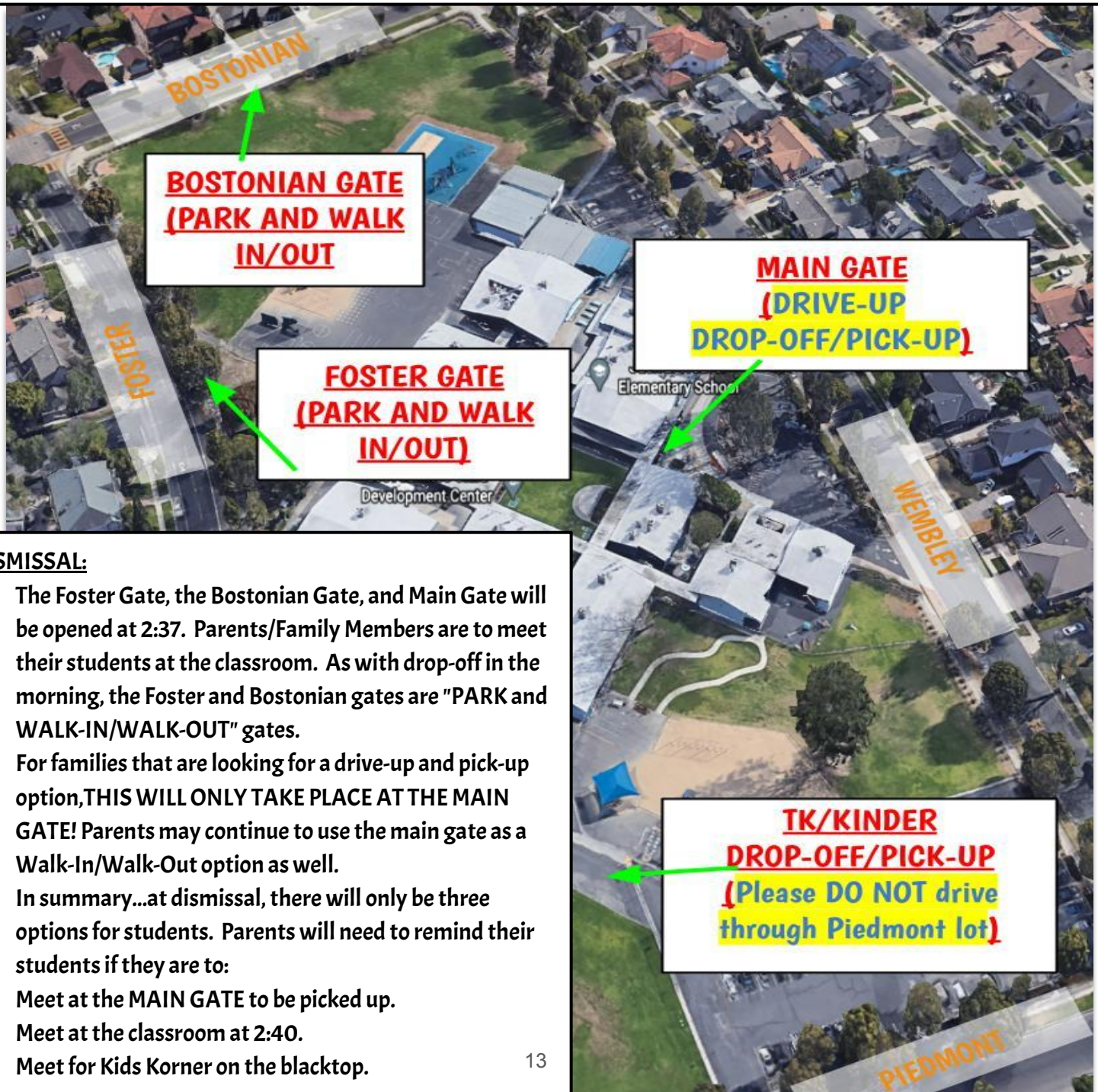
	Regular Day	Modified Day (Wednesday)	Minimum Day *
<u>START</u>			
Supervision Begins	8:00 am	8:00 am	8:00 am
5 Minute Warning Bell	8:10 am	8:10 am	8:10 am
School Starts (Tardy Bell) All Grades – PS & TK – 5th	8:15 am	8:15 am	8:15 am
<u>RECESS</u>			
TK, K, 1 st Grade	10:00 – 10:15	10:00 – 10:15	10:00 – 10:15
2 nd and 3 rd Grade	10:20 – 10:35	10:20 – 10:35	10:20 – 10:35
4 th and 5 th Grade	10:40 – 10:55	10:40 – 10:55	10:40 – 10:55
<u>LUNCH</u>			
TK, K, 1 st Grade	11:15 – 12:00	11:15 – 12:00	11:00 – 11:30
2 nd and 3 rd Grade	11:45 – 12:30	11:45 – 12:30	11:35 – 12:05
4 th and 5 th Grade	12:15 – 1:00	12:15 – 1:00	12:10 – 12:40
<u>Student DISMISSAL</u>			
Pre-school students – Rooms 1 & 2	1:50pm	1:15pm	12:45pm
TK/Kinder	1:40 pm	1:20 pm	12:45 pm
1 st -5 th Grade	2:40 pm	1:20 pm	12:45 pm

*Rainy days will follow the minimum day lunch schedule

PARKING LOT/DROP-OFF/PICK-UP PROCEDURES

ARRIVAL:

1. We will to open a Foster gate and the Bostonian gates at 8:00 for parents and students to come on to campus and use the playground. These gates will be "PARK and WALK-IN/WALK-OUT" gates. Families will park and walk-in to drop-off or pick-up students. As always, if utilizing this option, please be respectful of our neighbors' driveways and keep your speed under 25 mph, especially when in close proximity to school. Also, use designated crosswalks when parking on the opposite side of the street.
2. For families that are looking for a drive-up and drop-off option THIS WILL ONLY TAKE PLACE AT THE MAIN GATE! Parents may continue to use the main gate as a Walk-In/Walk-Out option as well.
3. At the 8:10 bell, a teacher on duty will blow the whistle once. Students will freeze and squat down. Parents need to say their goodbyes and start moving towards the exits. Teacher on duty will blow a whistle twice for students on the playground to line-up and then be escorted to class.



DISMISSAL:

1. The Foster Gate, the Bostonian Gate, and Main Gate will be opened at 2:37. Parents/Family Members are to meet their students at the classroom. As with drop-off in the morning, the Foster and Bostonian gates are "PARK and WALK-IN/WALK-OUT" gates.
2. For families that are looking for a drive-up and pick-up option, THIS WILL ONLY TAKE PLACE AT THE MAIN GATE! Parents may continue to use the main gate as a Walk-In/Walk-Out option as well.
3. In summary...at dismissal, there will only be three options for students. Parents will need to remind their students if they are to:
 - a. Meet at the MAIN GATE to be picked up.
 - b. Meet at the classroom at 2:40.
 - c. Meet for Kids Korner on the blacktop.

PARKING LOT/DROP-OFF/PICK-UP PROCEDURES

SAFETY REMINDERS:

Please...

- ☐ Do NOT block the driveways of private residences, double park, or make U-turns on any street around school. These actions can possibly jeopardize the safety of our students.
- ☐ ALWAYS KEEP THE SCHOOL TO THE RIGHT WHEN DROPPING-OFF or PICKING-UP! Do NOT drop off or pick-up on the opposite side of the street and have students cross the street unaccompanied.
- ☐ Remember that the speed limit is 25 MPH throughout Rossmoor.
- ☐ Use the crosswalks.
- ☐ Never cross the street from between parked cars. Driver's can't see you.
- ☐ Jaywalking anywhere, especially near schools during drop-off and pick up times, puts both pedestrians and drivers at risk

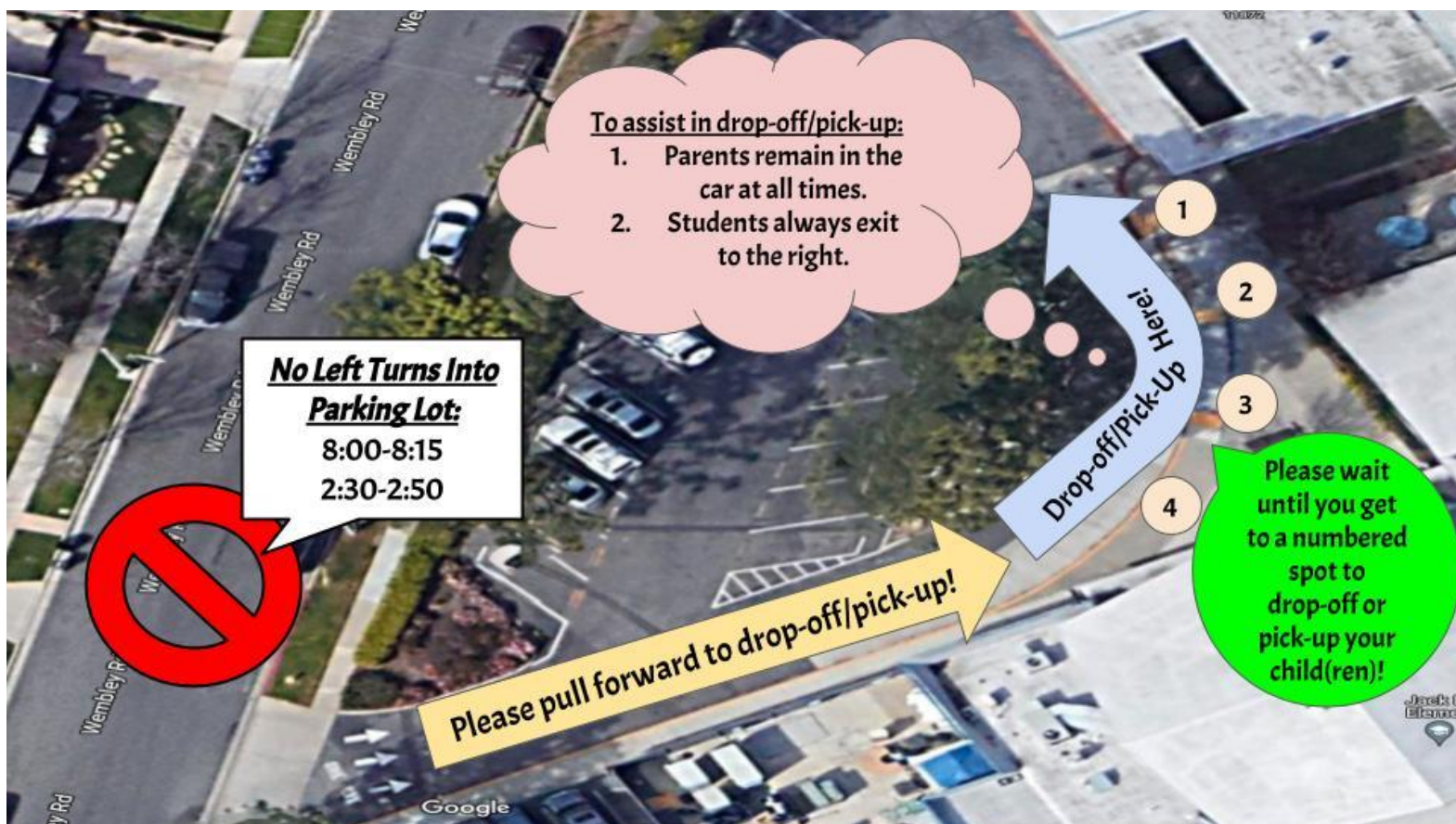
START OF THE DAY REMINDERS!

- ☐ Parents are welcome to enter campus with their student(s) when the gates open at 8:00am! Students may use the playground until the first bell rings at 8:10am!
- ☐ Students in grades 1-5 will drop off backpacks and line up on the blacktop by their teacher's sign. TK/K Students will meet by the kinder playground.
- ☐ Parents and students should remain on the blacktop and playground only. Please do not visit classrooms unless you have a scheduled appointment with the classroom teacher.
- ☐ Teachers will escort their students to the classroom. Parents should make their way to the gates to exit. Gates will be locked by 8:15am.

END OF THE DAY REMINDERS!

- ☐ Please note that the large playground will NOT be available for students that are not registered for Kids Korner.
- ☐ With between 250-300 of our students registered, it is imperative that we provide an orderly and safe option for check-in of so many students.
- ☐ As such, for our families that are picking-up their children in our classrooms, PLEASE EXIT PROMPTLY ONCE YOU HAVE PICKED UP YOUR STUDENT.
- ☐ We encourage you to utilize one of our amazing neighborhood parks if you are looking for an option for students to play after school!

Main Lot - Drop-Off/Pick-Up



Piedmont Lot - TK/K

- ❑ Please remember that the Piedmont lot is a staff-only lot. Parent parking must be along the street (unless you have a reserved family spot.)
- ❑ For all pedestrians, please enter on the far gate (closest to Foster Road) and walk along the fence to the entrance. Please escort your child to the kindergarten gate.
- ❑ If you are unable to walk your child up to the gate, PLEASE drop them off in the main lot through the circular driveway.
- ❑ Again, in the interest of safety, please DO NOT drop your child off unaccompanied into the Piedmont Lot. We have had several near-misses where unaccompanied students were running through the parking lot and were nearly hit by a car.
- ❑ To ensure the safety of all, please do NOT drive through the parking lot to drop-off your child.
- ❑ Please share these reminders with relatives who help with drop off.



Student Recognition

Student of the Month

Every month, we focus on one of the building blocks of UCLA's Coach John Wooden's Pyramid to Success. Students learn about the building block and ways to incorporate it into their daily lives. At the end of each month, each teacher chooses a student who best exemplifies that trait. That student will be recognized at a special Flag Ceremony where they will receive a certificate, a yard sign, and some special Weaver swag!

Good News Call of the Day

Sometimes, we want to recognize students for doing something a little extra special, a little extra respectful, and little extra worthy of praise. Throughout the year, all staff members will be encouraged to recognize students who distinguish themselves in a special way and submit them for a Good News Call of the Day. Each day, we will make a call to a parent, letting them know why their child is AWESOME! Students will receive a certificate, have the chance to sign the GOOD NEWS CALL OF THE DAY sign in the front office, and receive a small memento to remind them of the occasion!

Contests - Writing, Art, STEAM

Throughout the year, budding writers and artists will have opportunities to submit their work for awards and recognition throughout the school year. Be on the lookout for opportunities from the Daughters of the American Revolution, LAEF, and our PTA Reflections contest.



Special Programs

Giving Tree

Celebrating student birthdays at Weaver is fun and easy! Student birthdays are announced at flag ceremony by our Giving Tree volunteers and Corky, the school mascot! Parents can purchase a token for their child that will be taken to the Media Center to use our special Reading Vending Machine to choose a special birthday book! Go to https://www.weaverpta.org/the_giving_tree for more information!

Reading Lab

To support in the development of reading decoding and comprehension Skills, Weaver incorporates an intensive reading lab staffed by two reading teachers and a site literacy expert. Students receive intensive instruction in phonemic awareness to support in their development of strong decoding and comprehension skills.

Outdoor Science School (OSS)

All students in Grade 5 attend Outdoor Science School for 4 days with their classroom teacher in the San Bernardino Mountains. Hiking, studying botany and classes with a trained naturalist are just a few of the exciting activities enjoyed by all 5th grade students.

Sacramento Trip

Students in 4th grade have a unique opportunity to experience the California history curriculum that is a part of the 4th grade standards. Students experience government in action when they explore the California State Capitol building, discover the impact that the Transcontinental Railroad had on California and the nation during their visit to the Railroad Museum and the gold rush country at Marshall Park, the first gold discovery site in California. Students pan for gold on the American River and are introduced to Mountain Man, Tall Steve, will enlighten in a dramatic way, the life of trappers and guides during the Gold Rush. He'll share skins from animals that were a part of a trappers' life and tools they used. This is a memorable experience that students talk about for a lifetime. All 4th grade students and parents are encouraged to participate.

ACADEMIC ENRICHMENT

Inspyr Arts

Funded by generous donations from our PTA, Inspyr Arts is a monthly program where all TK-5 students receive instruction by a highly qualified educator on famous artists, their styles, and techniques. Then, each month, parent volunteers go into the classrooms, leading students in a hands-on art project utilizing the styles and techniques that made the artist famous!

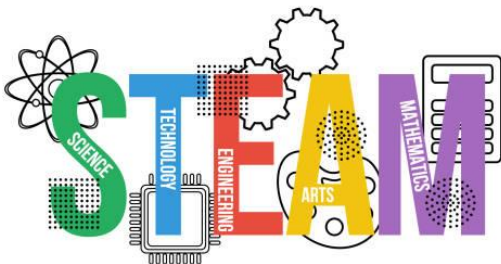
Music

Led by a certificated music teacher, all students in grades TK-5 receive weekly instruction in a variety of vocal and instrumental areas from rhythm, melody making, and tone to reading sheet music. Our music teacher also leads an all-student choir for interested students in grades 4-5. In addition to perfecting their vocal craft, these students put on several performances throughout the year at both the school and throughout the community. **Choir practice is on Wednesdays in the music room from 1:25-2:15!**

STEAM

All students in grades TK-5 have the opportunity to expand the scientific lessons they learn in the classroom through the hands-on STEAM lab. Funded by our wonderful Friends of Weaver (FOW), this lab time, in conjunction with the content being learned in each grade level, allows students the opportunity to interact with STEAM in a fun and engaging way.

In addition, each Spring, in partnership with LAEF, all students will have the opportunity to pursue an interest or a passion in the field of STEAM with our annual STEAM Fair.



Ambassadors

The Ambassador Program empowers students by providing them with opportunities to develop leadership, human relations, team building and communication skills. Students make a commitment to lead by example, demonstrate respect and responsibility and engage in community service. They also work to promote Weaver's inclusive culture at all grade levels. This a year-long youth leadership program provides an enriching approach to student leadership development that extends beyond the components of a traditional student council organization. Students in 5th grade are selected for the program during their 4th grade year. They lead our entire school community through multiple annual philanthropic and service events and activities.

Physical Education

While every student at Weaver has two recesses a day to play and exercise, it is important that students receive instruction in exercise, coordination, teamwork, and healthy living. All students in grades TK-5 receive weekly instruction by highly qualified teachers in the area of physical education. In addition, our fifth grade students are prepared to take the Presidential Physical Fitness Test through the U.S. Department of Education.

LAEF

The Los Alamitos Education Foundation (LAEF) provides opportunities for students to extend their learning through after school enrichment classes. Classes are provided across all grade levels in subjects such as art, science, dance, martial arts, foreign language, and other disciplines. Proceeds from the parent-funded classes support ongoing instruction and staffing at all district sites. For additional information visit:

www.laef4kids.org



WEAVER MAP



Weaver Elem. School
2021-2022

= Main Shut Off

Bostonian Dr.

S = staff restroom
B = boys restroom
G = girls restroom
V = visitor restroom

Student restrooms also located in rooms 1, 2, 3 and 5

Weaver Elementary
11872 Wembley Rd.
Los Alamitos, CA. 90720
562-799-4580



#WeAreWeaver